



AWAL  
MAKKAH

**karva**  
travel & tours

# 13D Umrah + 1N Taif



CONFIRMED  
FLIGHT



SPEED  
TRAIN



UMRAH  
VISA



NO HIDDEN  
CHARGES



26 NOV TO 08 DEC 2025

NOVEMBER DEPARTURE



10 DEC TO 22 DEC 2025

DECEMBER DEPARTURE



QUAD SHARING  
**SGD 5,645**  
PER PERSON



TRIPLE SHARING  
**SGD 5,745**  
PER PERSON



DBL SHARING  
**SGD 5,995**  
PER PERSON

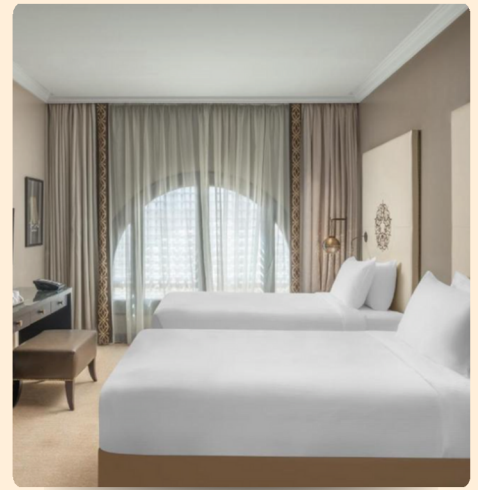
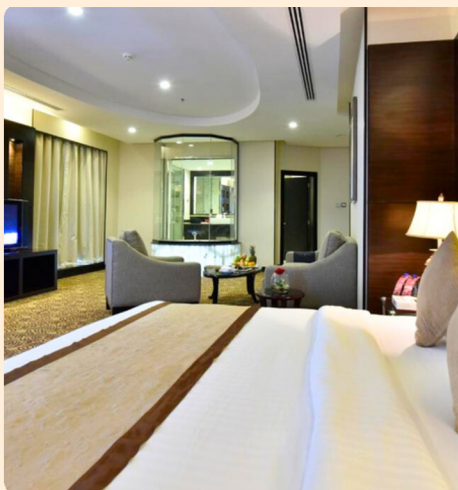
6N MAKKAH | 1N TAIF | 4N MADINAH



**Jumeirah**  
MAKKAH  
OR SIMILAR

**SOFITEL**  
SHAHD AL MADINAH  
OR SIMILAR





## Jumeirah Makkah Hotel

or similar ★★★★★

- ✓ 5 mins walk to Al-Masjid Al-Haram
- ✓ Breakfast, Lunch & Dinner
- ✓ 6 Nights in Makkah

## Awaliv International Hotel

or similar ★★★★★

- ✓ Located in the Heart of Taif City
- ✓ Breakfast & Dinner
- ✓ 1 Night in Taif

## Sofitel Shahd Al Madinah

or similar ★★★★★

- ✓ 3 mins walk to Al-Masjid An-Nabawi
- ✓ Breakfast & Dinner
- ✓ 4 Nights in Madinah



MAKKAH TO TAIF



TAIF TO MADINAH



MADINAH TO JEDDAH



**FLIGHT**  
Economy Class  
with Tax



**OFFICIAL**  
Experienced  
Mutawwif & Official



**SPEED TRAIN**  
1-Way Speed  
Train



**TAIF CITY TOUR**  
Taif City Tour  
with Cable Car  
ride and Lunch



**UMRAH VISA**  
Umrah Visa with  
Emergency Medical  
Insurance\*



**COACH**  
Transport Facilities  
Makkah, Madinah &  
Taif Tour



**BAGS**  
Sling Bag,  
Cabin Bag &  
Drawstring Bag



**IHRAM & TELEKUNG**  
Ihram for male  
& Siti Khadijah  
Telekung for female



**PERMIT**  
Umrah & Rawdah  
Permit\*



**ZAM ZAM WATER**  
5 Litre of Zam Zam  
Water per person



**UMRAH GUIDE**  
Umrah Class &  
Umrah Guidebook



**MEALS**  
International  
Buffet at Hotel

**Jumeirah**  
MAKKAH

OR SIMILAR

**SOFITEL**  
SHAHD AL MADINAH

OR SIMILAR

**AWALIV INTERNATIONAL HOTEL**  
OR SIMILAR



+65 9117 9414 | TA03650

# 13D Umrah + 1N Taif

## SAUDIA AIRLINES

### Departure

SV837 (SIN-JED) // 17:00PM – 21:30PM (JED)

### Arrival

SV836 (JED-SIN) // 01:35AM - 15:30PM (SIN)

**Note: All times indicated are the local times at the relevant airport / Airline & Itinerary are subject to change without notice**

DAY 1 (WED)	DAY 2 (THU)	DAY 3 (FRI)	DAY 4 (SAT)	DAY 5 (SUN)	DAY 6 (MON)	DAY 7 (TUE)
SINGAPORE — JEDDAH  CHECK-IN HOTEL (MAKKAH)	MAKKAH  <b>1ST UMRAH</b>	MAKKAH  <b>FRIDAY PRAYERS</b>	MAKKAH  ZIARAH MAKKAH  <b>2ND UMRAH</b>	MAKKAH	MAKKAH	MAKKAH—TAIF  CHECK-OUT MAKKAH & CHECK-IN HOTEL (TAIF)
DAY 8 (WED)	DAY 9 (THU)	DAY 10 (FRI)	DAY 11 (SAT)	DAY 12 (SUN)	DAY 13 (MON)	
TAIF — MADINAH  CHECK-OUT TAIF & CHECK-IN HOTEL (MADINAH)	MADINAH	MADINAH  <b>FRIDAY PRAYERS</b>	MADINAH  ZIARAH MADINAH	MADINAH — JEDDAH  CHECK-OUT MADINAH	JEDDAH — SINGAPORE	

INFANT FARE	CHILD FARE	
BELOW 2 YEARS OLD	2 TO 6 YEARS OLD	7 TO 11 YEARS OLD
\$850	45% off - without bed	20% off - with bed

SINGLE ROOM SUPPLEMENT	\$1,900
------------------------	---------

Registration Requirements	Package Excludes	Important Notes
Passport copy with minimum validity of 6 months and above from departure	Vaccinations (Covid, Meningitis, Influenza)	> Covid Vaccination (3 Dose) > Meningitis Vaccination
1pc coloured photograph with white background (4cmx6cm)	Travel Insurance	Package subject to change & approval of Visa from the authorities of Saudi Arabia
Covid Vaccination Certificate (Digital)	Excess Baggage	Any changes in price, pilgrims will be notified in advanced
Meningitis Vaccination Certificate (Digital)	Personal Expense	Package are based on current price & information

### Other Information:

- Hotel in Makkah for Triple / Quad Room - Roll Away Bed for 3rd & 4th Bed
- Baggage Allowance of 2x23kg