



AWAL
MAKKAH

karva
travel & tours

13D Umrah + 1N Taif



20 PAX
ONLY



SPEED
TRAIN



2X GUIDED
UMRAH



NO HIDDEN
CHARGES



06 AUG 2025 TO



18 AUG 2025

6N MAKKAH | 1N TAIF | 4N MADINAH



QUAD SHARING
SGD 4,995
PER PERSON



TRIPLE SHARING
SGD 5,095
PER PERSON



DBL SHARING
SGD 5,345
PER PERSON

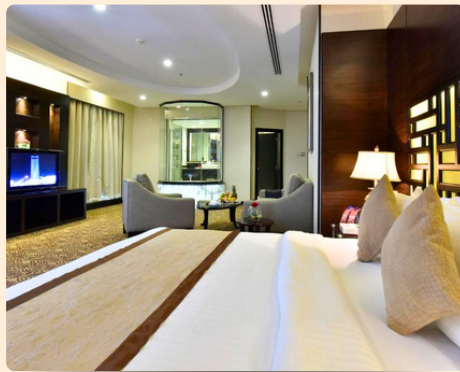
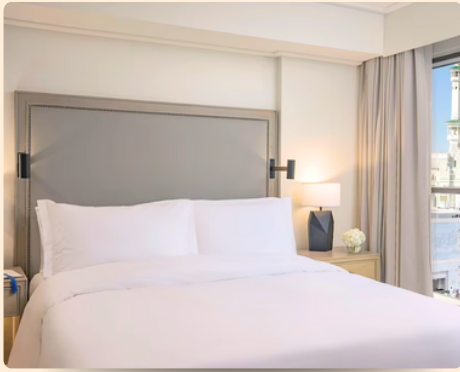

Emirates


MAKKAH
OR SIMILAR

S O F I T E L
SHAHD AL MADINAH
OR SIMILAR



فندق أوليف انترناشيونال
AWALIV INTERNATIONAL HOTEL
OR SIMILAR



Jumeirah Makkah Hotel

or similar ★★★★★

- ✓ 5 min walk to Al-Masjid Al-Haram
- ✓ Breakfast & Dinner
- ✓ 6 to 12 August 2025

Awaliv International Hotel

or similar ★★★★★

- ✓ Located in the Heart of Taif City
- ✓ Breakfast & Dinner
- ✓ 12 to 13 August 2025

Sofitel Shahd Al Madinah

or similar ★★★★★

- ✓ 3 mins walk to Al-Masjid An-Nabawi
- ✓ Breakfast, Lunch & Dinner
- ✓ 13 to 17 August 2025



MAKKAH TO TAIF



TAIF TO MADINAH



MADINAH TO JEDDAH



FLIGHT
Economy Class
with Tax



OFFICIAL
Experienced
Mutawwif & Official



SPEED TRAIN
1-Way Speed
Train



TAIF CITY TOUR
Taif City Tour
with Cable Car
ride and Lunch



UMRAH VISA
Umrah Visa with
Emergency Medical
Insurance*



COACH
Transport Facilities
Makkah, Madinah &
Taif Tour



BAGS
Sling Bag,
Cabin Bag &
Drawstring Bag



IHRAM & TELEKUNG
Ihram for male
& Siti Khadijah
Telekung for female



PERMIT
Umrah & Rawdah
Permit*



ZAM ZAM WATER
5 Litre of Zam Zam
Water per person



UMRAH GUIDE
Umrah Class &
Umrah Guidebook



MEALS
International
Buffet at Hotel

Jumeirah
MAKKAH

OR SIMILAR

SOFITEL
SHAHD AL MADINAH

OR SIMILAR

★★★★★
AWALIV INTERNATIONAL HOTEL
OR SIMILAR



+65 9117 9414

| TA03650

EMIRATES AIRLINES

Departure

EK 0315 (SIN-DXB) // 10:35 AM (SIN) – 1:55 PM (DXB)
EK 0803 (DXB-JED) // 3:45 PM (DXB) - 5:50 PM (JED)

Arrival

EK 0810 (MED-DXB) // 5:35PM (MED) - 9:15PM (DXB)
EK 0348 (DXB-SIN) // 2:20 AM (DXB) - 2:05 PM (SIN)

Note: All times indicated are the local times at the relevant airport / Airline & Itinerary are subject to change without any notice.

DAY 1 (WED)	DAY 2 (THU)	DAY 3 (FRI)	DAY 4 (SAT)	DAY 5 (SUN)	DAY 6 (MON)	DAY 7 (TUE)
SINGAPORE — JEDDAH	MAKKAH 1ST UMRAH	MAKKAH FRIDAY PRAYERS	MAKKAH ZIARAH MAKKAH 2ND UMRAH	MAKKAH	MAKKAH	MAKKAH — TAIF CHECK-OUT MAKKAH & CHECK-IN TAIF
DAY 8 (WED)	DAY 9 (THU)	DAY 10 (FRI)	DAY 11 (SAT)	DAY 12 (SUN)	DAY 12 (SUN)	
TAIF — MADINAH CHECK-OUT TAIF & CHECK-IN MADINAH	MADINAH ZIARAH MADINAH	MADINAH FRIDAY PRAYERS	MADINAH	MADINAH — JEDDAH CHECK-OUT MADINAH	JEDDAH — SINGAPORE	

INFANT FARE	CHILD FARE	
BELOW 2 YEARS OLD	2 TO 6 YEARS OLD	7 TO 11 YEARS OLD
\$950	45% off - without bed	20% off - with bed

SINGLE ROOM SUPPLEMENT	\$1,900
------------------------	---------

Registration Requirements	Package Excludes	Important Notes
Passport copy with minimum validity of 6 months and above from departure	Vaccinations (Covid, Meningitis, Influenza)	Covid Vaccination (3 Dose) Meningitis Vaccination
1pc coloured photograph with white background (4cmx6cm)	Travel Insurance	Package subject to change & approval of Visa from the authorities of Saudi Arabia
Covid Vaccination Certificate (Digital)	Excess Baggage	Any changes in price, pilgrims will be notified in advanced
Meningitis Vaccination Certificate (Digital)	Personal Expense	Package are based on current price & information

Other Information:

- Hotel in Makkah for Triple / Quad Room - Roll Away Bed for 3rd & 4th Bed
- Baggage Allowance of 30KG