



AWAL  
MAKKAH

**karva**  
travel & tours

# 13D Umrah + 1N Taif



20 PAX  
ONLY



SPEED  
TRAIN



2X GUIDED  
UMRAH



NO HIDDEN  
CHARGES



24 SEP 2025 TO



06 OCT 2025

6N MAKKAH | 1N TAIF | 4N MADINAH



QUAD SHARING  
**SGD 4,995**  
PER PERSON



TRIPLE SHARING  
**SGD 5,095**  
PER PERSON



DBL SHARING  
**SGD 5,345**  
PER PERSON

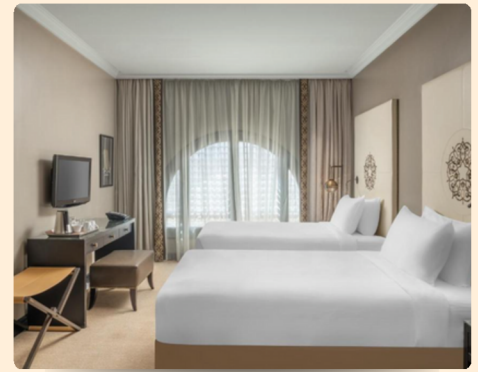
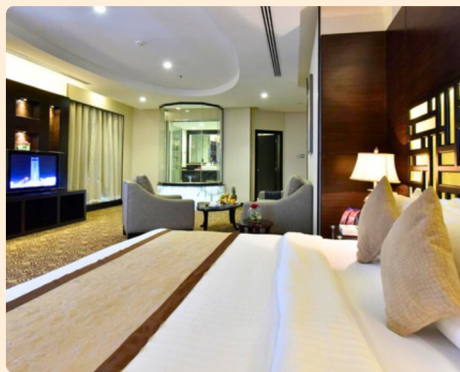


**Jumeirah**  
MAKKAH  
OR SIMILAR

**S O F I T E L**  
SHAHD AL MADINAH  
OR SIMILAR



فندق اوليف انترناشيونال  
★★★★★  
**AWALIV INTERNATIONAL HOTEL**  
OR SIMILAR



### Jumeirah Makkah Hotel

or similar ★★★★★

- ✓ 5 min walk to Al-Masjid Al-Haram
- ✓ Breakfast & Dinner
- ✓ 24 to 30 Sep 2025

### Awaliv International Hotel

or similar ★★★★★

- ✓ Located in the Heart of Taif City
- ✓ Breakfast & Dinner
- ✓ 30 Sep to 01 Oct 2025

### Sofitel Shahd Al Madinah

or similar ★★★★★

- ✓ 3 mins walk to Al-Masjid An-Nabawi
- ✓ Breakfast, Lunch & Dinner
- ✓ 01 to 05 Oct 2025



MAKKAH TO TAIF



TAIF TO MADINAH



MADINAH TO JEDDAH



**FLIGHT**  
Economy Class  
with Tax



**OFFICIAL**  
Experienced  
Mutawwif & Official



**SPEED TRAIN**  
1-Way Speed  
Train



**TAIF CITY TOUR**  
Taif City Tour  
with Cable Car  
ride and Lunch



**UMRAH VISA**  
Umrah Visa with  
Emergency Medical  
Insurance\*



**COACH**  
Transport Facilities  
Makkah, Madinah &  
Taif Tour



**BAGS**  
Sling Bag,  
Cabin Bag &  
Drawstring Bag



**IHRAM & TELEKUNG**  
Ihram for male  
& Siti Khadijah  
Telekung for female



**PERMIT**  
Umrah & Rawdah  
Permit\*



**ZAM ZAM WATER**  
5 Litre of Zam Zam  
Water per person



**UMRAH GUIDE**  
Umrah Class &  
Umrah Guidebook



**MEALS**  
International  
Buffet at Hotel

Jumeirah  
MAKKAH

OR SIMILAR

SOFITEL  
SHAHD AL MADINAH

OR SIMILAR

★★★★★  
AWALIV INTERNATIONAL HOTEL  
OR SIMILAR



+65 9117 9414

| TA03650

# 13D Umrah + 1N Taif

## EMIRATES AIRLINES

### Departure

EK 0315 (SIN-DXB) // 10:35 AM (SIN) – 1:55 PM (DXB)  
EK 0803 (DXB-JED) // 3:45 PM (DXB) - 5:50 PM (JED)

### Arrival

EK 0810 (MED-DXB) // 5:35PM (MED) - 9:15PM (DXB)  
EK 0348 (DXB-SIN) // 2:20 AM (DXB) - 2:05 PM (SIN)

**Note: All times indicated are the local times at the relevant airport / Airline & Itinerary are subject to change without notice**

DAY 1 (WED)	DAY 2 (THU)	DAY 3 (FRI)	DAY 4 (SAT)	DAY 5 (SUN)	DAY 6 (MON)	DAY 7 (TUE)
SINGAPORE — JEDDAH  CHECK-IN HOTEL (MAKKAH)	MAKKAH  <b>1ST UMRAH</b>	MAKKAH  <b>FRIDAY PRAYERS</b>	MAKKAH  ZIARAH MAKKAH <b>2ND UMRAH</b>	MAKKAH	MAKKAH	MAKKAH—TAIF  CHECK-OUT MAKKAH & CHECK-IN HOTEL (TAIF)
DAY 8 (WED)	DAY 9 (THU)	DAY 10 (FRI)	DAY 11 (SAT)	DAY 12 (SUN)	DAY 13 (MON)	
TAIF — MADINAH  CHECK-OUT TAIF & CHECK-IN HOTEL (MADINAH)	MADINAH  ZIARAH MADINAH	MADINAH  <b>FRIDAY PRAYERS</b>	MADINAH	MADINAH — JEDDAH  CHECK-OUT MADINAH	JEDDAH — SINGAPORE	

INFANT FARE	CHILD FARE	
BELOW 2 YEARS OLD	2 TO 6 YEARS OLD	7 TO 11 YEARS OLD
\$950	45% off - without bed	20% off - with bed

SINGLE ROOM SUPPLEMENT	\$1,900
------------------------	---------

Registration Requirements	Package Excludes	Important Notes
Passport copy with minimum validity of 6 months and above from departure	Vaccinations (Covid, Meningitis, Influenza)	> Covid Vaccination (3 Dose) > Meningitis Vaccination
1pc coloured photograph with white background (4cmx6cm)	Travel Insurance	Package subject to change & approval of Visa from the authorities of Saudi Arabia
Covid Vaccination Certificate (Digital)	Excess Baggage	Any changes in price, pilgrims will be notified in advanced
Meningitis Vaccination Certificate (Digital)	Personal Expense	Package are based on current price & information

### Other Information:

- Hotel in Makkah for Triple / Quad Room - Roll Away Bed for 3rd & 4th Bed
- Baggage Allowance of 30kg